



17th Annual Bad Axe Men's Advance

When: August 12th, 13th, and 14th

Where: Camp Wilderness, Journey Trail, Park Rapids, MN 56470

Scout Camp located 17 miles north of Park Rapids, MN. [See map next page](#)

Cost: \$130 (covers lodging, meals, all activity areas, fishing, and snacks and a t-shirt if you Pre- Register by **7/1/22)**

Rope's course {extra fee}

Speakers:

Clif G. (Oklahoma City, OK)

Darin H. (Kansas City, KS)

Friday, August 12th

5:00-8:00pm – Registration & Check-In

8:00pm - Supper

9:00pm - Friday Night Ask-it Basket with the Speakers

--BONFIRE--

Saturday, August 13th

8:30-9:30am – Breakfast

9:30am – Clif G. Workshop

11:00am – Darin H. Workshop

12:30pm – Lunch & Free Time on your own

1:00-6:45pm Free Time: walks, Ropes course, fishing, kayaking, Sponsor time

7:00-8:00pm Dinner

8:00pm – Saturday Night Speaker Clif G.

--BONFIRE--

Sunday, August 14th

9:00-10:00am – Sunday Breakfast

10:15am – Sunday Speaker Darin H.

1:00pm – Depart & Lunch on your own

Scholarships are available from \$5 to \$130 whatever you need

No one will miss this event because of lack of money!

Questions contact Kelvin D. (701)793-2003 or Craig V. (605)651-6851

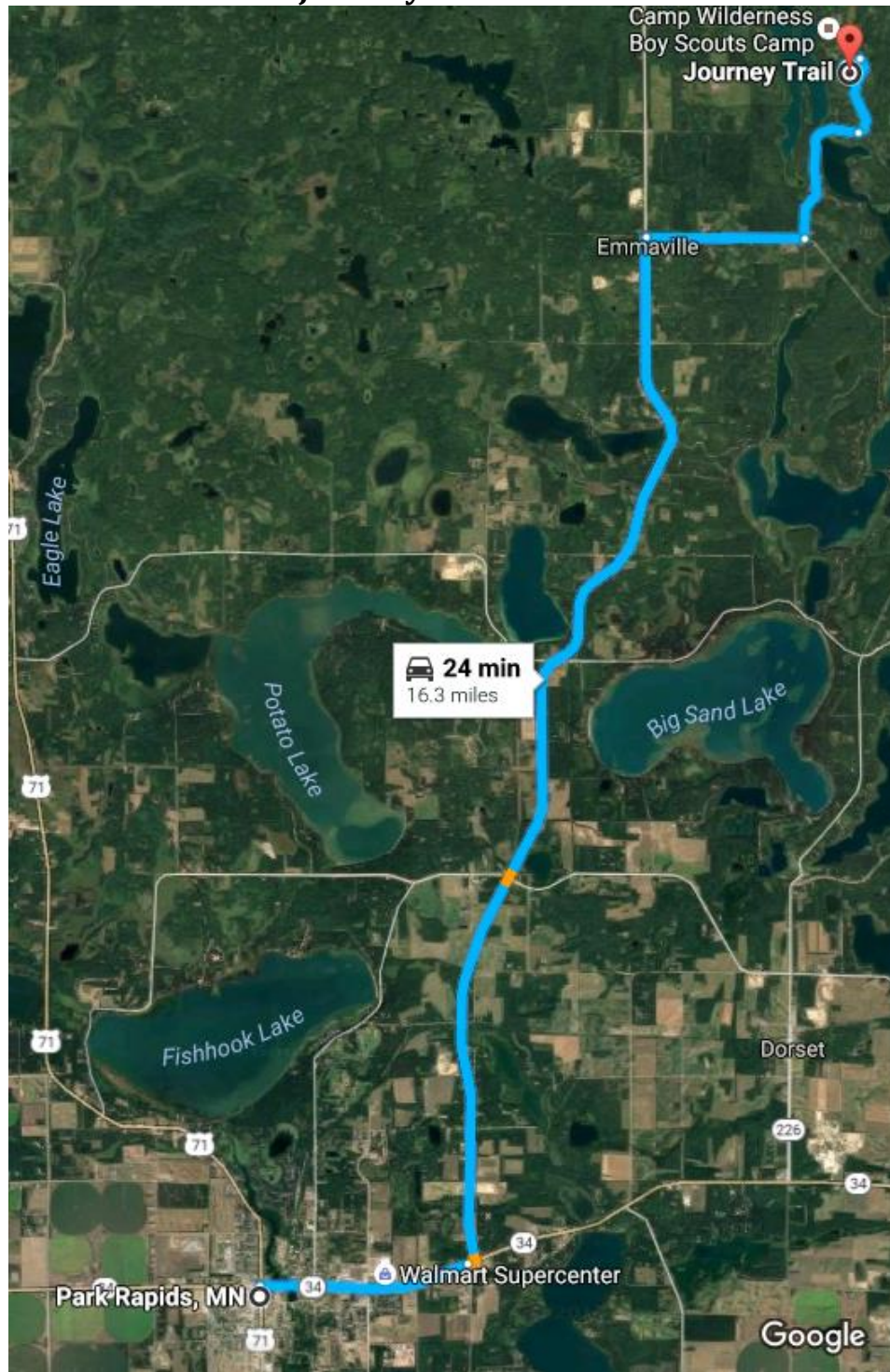
We always need help cleaning up after meals Thank you in advance

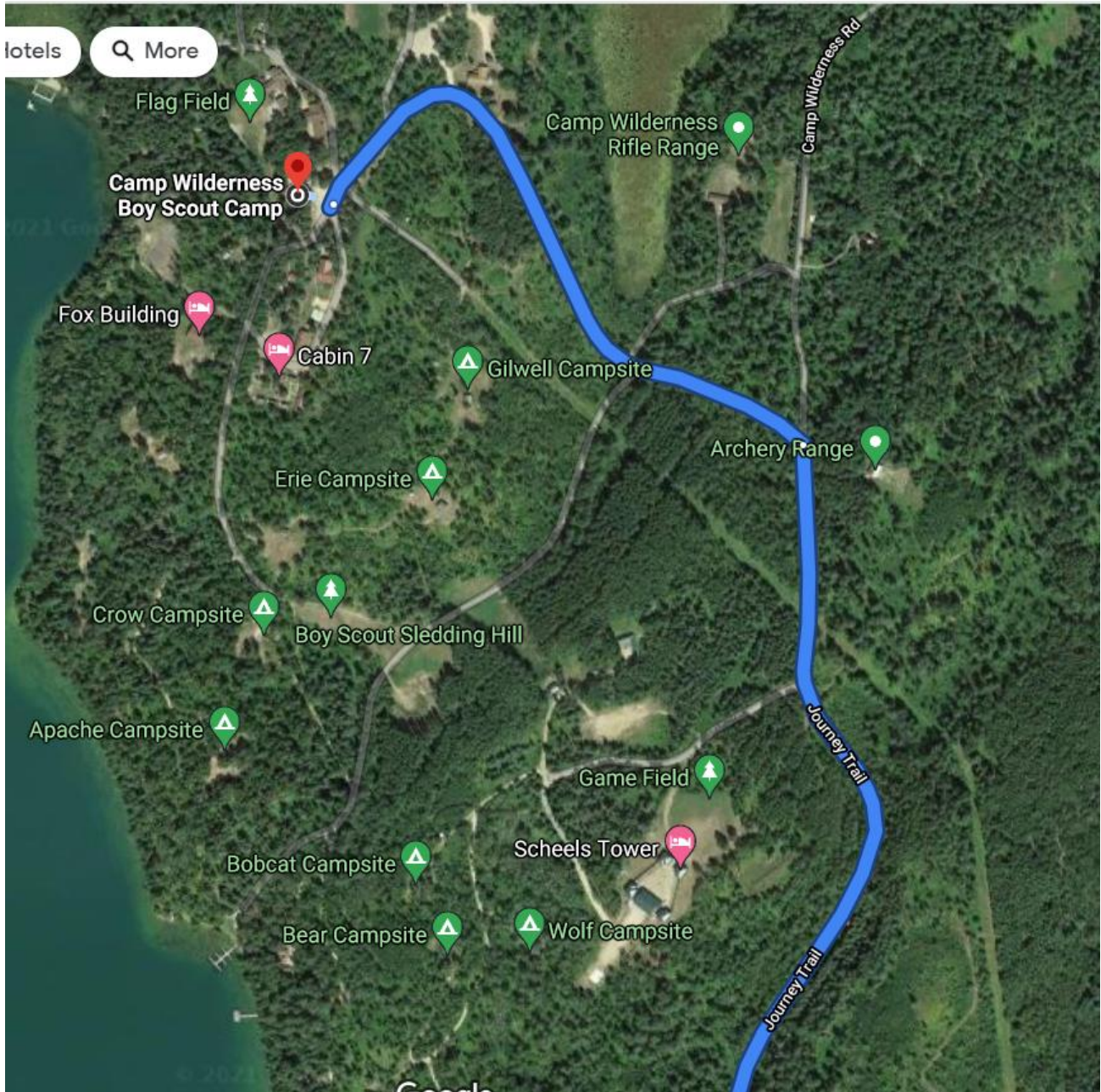
Please help us by doing Pre- Registration

<https://badaxeweekend.com/registration/>



Drive 16.3 miles, 24 min
Park Rapids, MN to Journey Trail, Park Rapids, MN 56470
Turn left off of journey trail towards Butler Cabin







**From Park Rapids
Minnesota 56470**

Head east on MN-34 E/1st St W toward Park Ave S

**Turn left onto Co Hwy 4/County 4
10.4 mi**

**Turn right onto County 24
1.5 mi**

**Turn left onto Jewel Dr
1.4 mi**

**Slight left onto Journey Trail
Restricted usage road
0.9 mi**

**Turn left to stay on Journey Trail
Restricted usage road
0.4 mi**

**Continue straight
Restricted usage road
Destination will be on the right
13 ft**

**Camp Wilderness Boy Scout Camp
29984 Journey Trail, Park Rapids, MN 56470**